



Naz Foundation International



India Naz Foundation International



European

Report on HIV services mapping for MSM across 12 states in India

**Supporting the scale up of HIV services for
males who have sex with males (MSM) in India**

Contract No: DCI-NSAPVD/2008/159-184



September 2009

Information note

The European Union supported project on supporting the scale up of HIV services for males who have sex with males (MSM) in India, a three-year project, will eventually cover 18 states. During the initial phase of support, only 12 states were covered. The remaining 6 states are where new MSM CBOs will be developed during the remainder of the project.

Front cover image: Discussions being held at the Sahodaran drop-in-centre in Chennai, Tamil Nadu.

Acknowledgment

This publication has been produced with the assistance of the European Union. The contents of this publication are the sole responsibility of India Naz Foundation International and can in no way be taken to reflect the position of the European Union.

INFI would also like to thank all individuals whose images appear in this report for giving permission to do so.

Contents

Section	Page
Information note	2
Acknowledgements	3
Key abbreviations	5
Background	6
Project summary sheet	8
INFI technical assistance programme	10
Process of mapping	11
Key findings	14
Conclusions	16
Key recommendations	16
Annexure: survey	17

Key abbreviations

AIDS	Acquired Immune Deficiency Syndrome
BCC	Behaviour, Change, Communication
CBO	Community-based organisation
DAPCU	District AIDS Prevention and Control Unit
EU	European Union
HIV	Human Immunodeficiency Virus
INFI	India Naz Foundation International
MSM	Males who have sex with males
NACO	National AIDS Control Organisation
NACP III	National AIDS Control Programme Phase III
NCR	National Capital Territory
NFI	Naz Foundation International
NGO	Non-government organisation
NIPASHA	Network of Indian People of Alternate Sexualities living with HIV/AIDS
PLHIV	People living with HIV
SACS	State AIDS Control Organisation
SHP	Sexual Health Products
TSO	Technical Support Officer
UNAIDS	Joint UN Programme on AIDS
UT	Union Territory

Background of EU supported project

In India, populations of males who have sex with males¹ (MSM) have a high risk of HIV infection. UNAIDS epidemiological data shows that while the estimated HIV prevalence among adults (15–49) was 0.3% (range 0.2% to 0.5%); HIV prevalence among MSM was 6.4%². Sexual behavioural studies in India have estimated that homosexual males comprise from 1% of the male population to nearly 28% of the “occasionally homosexual behavioural males”. The Report of the Expert Group on Size Estimation of Population with High Risk Behaviour for NACP-III, RCSHA-2006, estimates that the number of MSM is 2.34 million in India, and that there are an estimated 235, 213 male sex workers³.

However, despite the increasing HIV prevalence among MSM, due in part to the conservative political climate; there is a lack of appropriate HIV prevention, treatment, care and support services, along with significant levels of stigma, discrimination and social exclusion. Governments at all levels have been reluctant to fund and support MSM interventions as part of their HIV responses. Even when funding is provided for MSM-related activities, it is often for “top-down” interventions, developed and run by non-MSM organisations.

Supporting MSM CBOs in their active involvement in policy-making, and in the choice, development, implementation, monitoring and evaluation of programmes, is crucial to ensuring that programmes are in fact responsive to, and address the needs of MSM, particularly the poorest, most marginalized and illiterate. Furthermore, such involvement is central to destigmatising HIV, strengthening the capacity of MSM communities to respond to the epidemic, and in protecting the human dignity of MSM.

Since 1996, the Naz Foundation International has helped develop and support a significant number of CBOs across South Asia, including in India, to address male-to-male sex and HIV. This has been achieved by supporting the development of national MSM country partners, through which NFI provides such support. These national CBOs continue to rely on NFI for support on managerial, fund raising, and policy and advocacy issues. However, the network of MSM CBOs is still limited, and as a result, service coverage for MSM remains inadequate. As a part of NFI’s strategic response, in 2005, India NFI was established as NFI’s country partner in India.

India NFI sees its role as forging lasting connections with four separate but inter-related target populations, namely:

1. Primary beneficiaries – males from poor, marginalised and vulnerable communities, who regularly have sex with other males. Many of these males are engaged in male-to-male sex work, and all of them will directly benefit from community-level initiatives
2. Secondary beneficiaries – the sexual partners – both male and female – of the primary beneficiaries
3. Linking organizations – those organizations that provide day-to-day support to community-level initiatives
4. Enablers – decision makers, opinion leaders, and funding agencies etc., who provide the political and financial support required to sustain community-level initiatives.

¹ INFI uses the term “males” rather than “men” for a range of socio-cultural reasons. The word “men” can be problematic in a cultural sense since manhood and adulthood are synonymous, and adulthood is not defined in a biological sense. Further, many MSM are self-defined as “not-men” and are also perceived as such. In the context of representation it was felt that NFI should not impose a gender identity, but reflect what exists. Hence the biological term males is used by NFI.

² UNAIDS (2008). Report of the Global Epidemic. Annex 1.

http://data.unaids.org/pub/GlobalReport/2008/jc1510_2008_global_report_pp211_234_en.pdf

³ NACO (2006). National AIDS Control Programme Phase – III (2006-2011).

[http://www.nacoonline.org/upload/Publication/Strategy%20and%20Implementation%20Plan%20-%20NACO%20Programme%20Phase%20III%20\(2006-2011\)%202006.pdf](http://www.nacoonline.org/upload/Publication/Strategy%20and%20Implementation%20Plan%20-%20NACO%20Programme%20Phase%20III%20(2006-2011)%202006.pdf)

A key component of such support is policy and advocacy development, where significant levels of stigma and discrimination exist against MSM, which leads to denial of HIV services, and often lack of appropriate services where they can access them. It is also a strongly held conviction that community-led initiatives were the most effective approach (and seen as a UNAIDS best practice) to building sustainability in behaviour change and risk reduction.

The strengthening of existing MSM CBOs, and the development and strengthening of new MSM CBOs is central to INFI's plans to scale up technical and knowledge support, to provide an effective monitoring and evaluation framework, and to improve the quality of epidemiological data. Ensuring that MSM CBOs have the capacity to deliver appropriate services to MSM, particularly to the most marginalized, and to advocate with government, private and NGO partners, to ensure that service delivery, research, and surveillance are correctly and appropriately targeted, is essential for success. It is only through such a process that efforts to meet universal prevention, treatment, care and support targets for MSM have any chance of being met.

Further, MSM CBOs have direct links to the primary beneficiaries and as such are well placed to link them to existing HIV prevention, diagnosis, care, support and treatment services, while at the same time identifying existing gaps in services, and which new services are required, possible locations and the composition of such services. This includes MSM specific services, integration of MSM services into sexual health clinics, and relevant referral mechanisms.

Along with this, MSM CBOs are also in touch with a range of service providers, so that that training needs can be identified, including sensitisation of service providers on the sexual health needs of MSM, and advocacy for non-stigmatising provision of services. In addition to working with service providers, the current action also targets all relevant stakeholders, including state-level technical support services, as well as state AIDS control societies (SACS) and district AIDS prevention and control units (DAPCUs). Advocacy and technical support for district level mapping, HIV prevention research, and ensuring services are more accessible to MSM are primary concerns of INFI. In summary, MSM CBOs are in a unique position to bridge the divide between government institutions and marginalized MSM, increasing the likelihood that MSM will access appropriate and non-judgemental services, as and when these are available.

This report explores what level of HIV services are being provided by a range of service providers across 12 states currently mapped. The remaining 6 states in which INFI will be engaged with will be mapped at a latter date when INFI begins the process of developing new MSM CBOs in these states.

EU supported project summary

Total duration of the action	36 months
Objectives of the action	<p><i>Overall objective:</i> To reduce HIV (and STI) transmission among males who have sex with males (MSM) and their sexual partners, by increasing the capacity of MSM CBOs to scale up programmes targeting HIV prevention, treatment, care and support for MSM.</p> <p><i>Specific objective:</i> To strengthen the capacity of the India NFI as a national provider of technical assistance, support, advocacy and policy development to 36 existing MSM community-based organizations and 2 national networks, and support the establishment of 14 new MSM community-based organisations, to enable scaling up of coverage of HIV prevention, treatment, care and support to 50% for MSM in a total of 16 states, a Union Territory, and the National Capital Territory of Delhi⁴. See Annex 1 for a list of current and proposed projects in these areas, and the full list of areas.</p>
Partner(s)	India, Naz Foundation International
Target group(s)	MSM community-based organisations providing HIV services for MSM
Final beneficiaries	Low income males who have sex with males
Estimated results	<p>By end of Project:</p> <ul style="list-style-type: none"> • India NFI's technical support and knowledge units strengthened and office expanded and equipped to provide assistance to MSM CBOs on an on-going basis. • By the end of project, 50 MSM CBOs at state and district levels have been strengthened and are working with India NFI, receiving regular technical assistance and support in 16 states, a Union Territory, and the National Capital Territory of Delhi • By the end of the project, the National MSM and HIV Policy, Advocacy and Human Rights Network and the Network of India People of Alternate Sexualities Living with HIV are receiving technical assistance and support, and are linked to and working with all 50 MSM CBOs. • By the end of project, technical support and assistance, along with knowledge support have been provided to state AIDS control societies and district AIDS control units, to map MSM sexual networks, and to enable them to access MSM HIV prevention, treatment, care and support service providers in 16 states, a Union Territory, and the National Capital Territory of Delhi • Appropriate policies developed and implemented by governmental, and private and non-governmental organisations, which deliver HIV prevention, treatment, care and support services, to address stigma, discrimination and social exclusion against MSM • A range of appropriate BCC materials (posters, leaflets and booklets etc.), training and capacity building toolkits and manuals developed for, and available to MSM CBOs. • Effective monitoring and evaluation, including financial auditing has been undertaken, and the lessons learned from the project have been distilled and disseminated

⁴ Initially it had been planned to work in 12 states, but this is being extended to include a further 6 states, including a Union Territory and the capital.

<p>Main activities</p>	<ul style="list-style-type: none"> • Current INFI office expanded, refurbished and equipped for action, along with staff recruitment, induction and training • Development of specific annual work plans for the three technical support officers and their implementation to conduct capacity building and organisational strengthening to the 16 states, a Union Territory, and the National Capital Territory of Delhi • On-going discussions with SACs in these states and agreements on priority areas for development of new MSM CBOs including mapping, and implementation along with linking MSM CBOs to diagnostic, treatment, care and support services • State level capacity building workshops to develop 14 new MSM CBOs and secure funding for them through SACs • Strengthening capacity of the network of advocacy cells that currently make up the National MSM and HIV Policy, Advocacy and Human Rights Task Force through access to the Technical Support Unit and Knowledge Unit of INFI • Strengthening capacity of the network of MSM PLHIV organisations that currently make up NIPASHA, through access to the Technical Support Unit and Knowledge Unit of INFI • Policy development and advocacy with SACs/DAPCUs to reduce stigma, discrimination against MSM • Development of a range of multi-lingual BCC resources, tool and manuals appropriate to the sexual health needs of MSM • Knowledge Unit responding to requests for support, managing a website and resource centre • Regular monitoring and evaluation visits and audits conducted and reports produced
-------------------------------	--

INFI technical assistance programme to MSM CBOs

We provide technical support and assistance to our MSM CBO partners, MSM networks and local groups, to develop their own self help, HIV service provision through training, capacity building, access to a range of tool-kits, management support, and monitoring and evaluation.

A key element in MSM being primarily engaged in planning, development, and service delivery of their own sexual health services is the framework of community development and mobilization as a means of empowering MSM to establish new MSM CBOs to deliver sexual health services for their constituents.

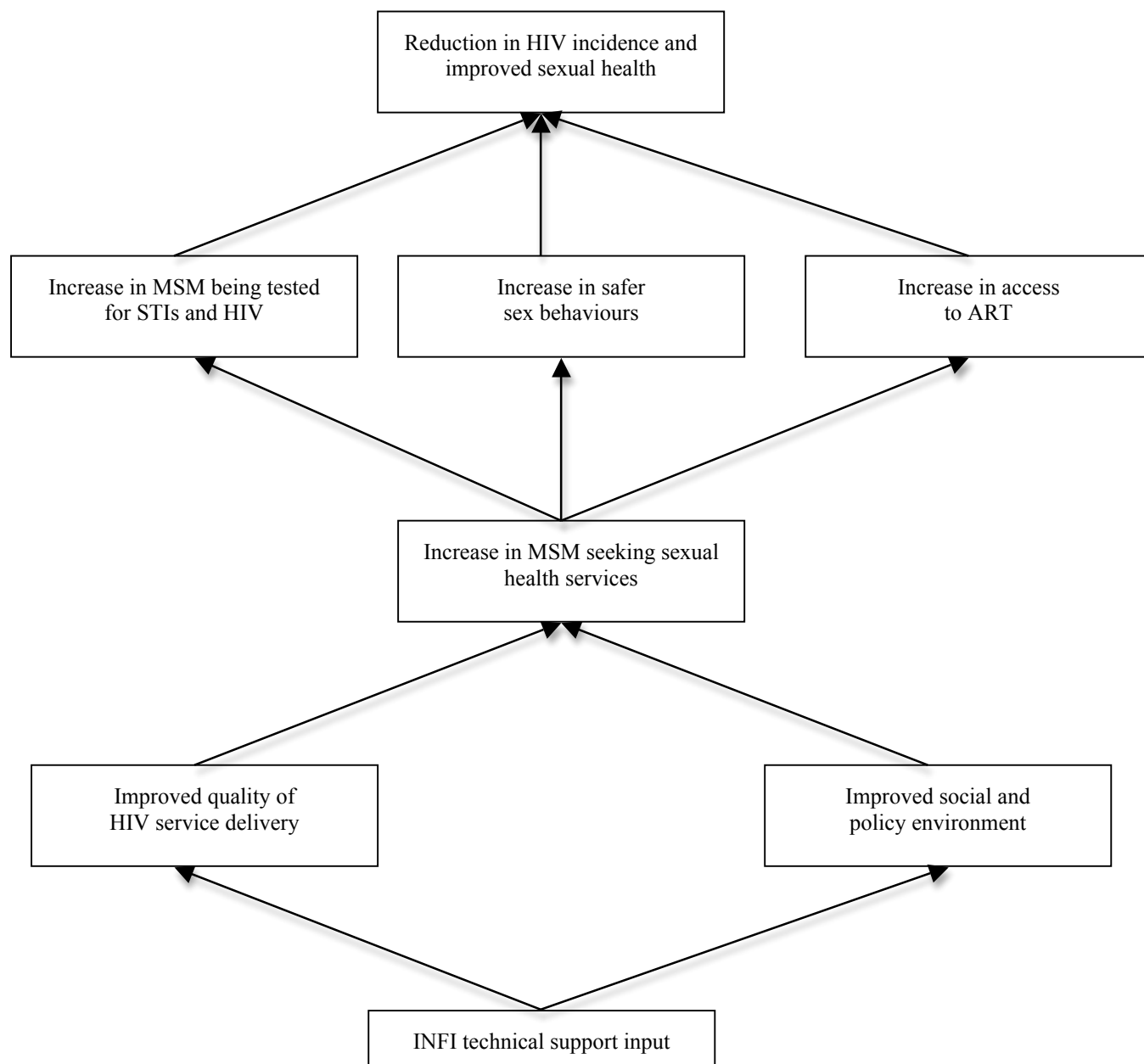
Along with primary support, we also support non-government organizations and other institutions where they are currently providing HIV services for MSM through sensitisation, knowledge development, training, and capacity building.

What INFI offers

- An experience technical team.
- A clearly defined response strategy to the issues, needs and concerns of MSM.
- Proven development resources and tool-kits.
- Capacity building programmes to enhance management and service delivery.
- Advocacy and policy development support to ensure effective engagement of MSM in these activities.
- Community leadership development and mentoring.
- Direct access to Naz Foundation International's technical support and resource development unit.

Process of mapping

As a part of their capacity building programme for MSM CBOs, the INFI technical support team conduct a range of site visits to each of the States engaged in this project. These initial states already had existing MSM CBOs providing HIV services, some that INFI were already providing technical assistance to, albeit in a limited way. The EU supported project enabled INFI to expand its technical assistance programme to strengthen their management and services delivery capacity towards increasing the number of MSM users.



During these site visits to the various states, a range of discussions were held with existing MSM CBOs that INFI is working with, along with further discussions with representatives from the relevant State AIDS Control Societies (SACS), to discover what other service providers existed in these states, and specifically what services they provided.

In addition, a desk review was also conducted on existing databases for programme reports, organisational brochures, and a range of donor agencies supporting organisations working in a particular state to deliver HIV services for MSM. Data collected was verified by phone calls to the different agencies providing HIV services for MSM.

The States and Union Territories covered in this report are:

Andhra Pradesh
 Bihar
 Goa
 Karnataka
 Kerala
 Maharashtra
 Manipur
 New Delhi
 Pondicherry
 Tamil Nadu
 Uttar Pradesh
 West Bengal

(Note: The states of Assam, Orissa, Madhya Pradesh, Punjab, Rajasthan, Uttrakhand) will be covered in a subsequent report.)

An Excel spreadsheet was used to collate all the data:

State											
District	Agency name	Nature of Agency	Services provided								
			STI	ICTC	ART	LA	OR	DiC	COUN	SHP	BCC

Nature of agency: identifies whether the agency is a network, a CBO, or and NGO. The difference between a CBO and NGO was clearly articulated. A CBO was defined as an organisation managed by MSM themselves, working with their constituents, while an NGO was defined as a non-MSM led institution working for MSM.

Acronyms used in the table in order:

STI	Treatment for sexually transmitted infections
ICTC	HIV testing and counselling
ART	Anti-retroviral treatment services
LA	Legal Advice: A is advocacy with police
OR	Outreach services
DiC	Drop-in centre
COUN	Counselling
SHP	Condoms distribution
BCC	Information and education leaflets being distributed
R	Referrals

No attempt was made to review the quality of the service provision by the range of service providers. A much larger study would be required to achieve a qualitative survey.



Meeting with an NGO in Uttar Pradesh

Key findings

The service mapping identified a total of 108 projects working in 39 districts across 10 States, 1 UT and NCR were mapped for service availability for MSM related to HIV. Range of information around service availability was collected and many organisation are providing the services based on the geographical size of the district.

Table 1

S. No.	State/UT	No. Of Agencies	S. No.	State/UT	No. Of Agencies
1.	Andhra Pradesh	17	7.	Manipur	05
2.	Bihar	05	8.	New Delhi	08
3.	Goa	03	9.	Pondicherry	01
4.	Karnataka	09	10.	Tamilnadu	15
5.	Kerala	13	11.	Uttar Pradesh	13
6.	Maharashtra	09	12.	West Bengal	10

HIV services provision

It is increasingly being recognised that the most effective approach to marginalised populations highly vulnerable to HIV infection is the provision for comprehensive prevention. Such an approach includes outreach, drop-in centres, counselling distribution of condoms and lubricant, STI treatment, HIV counselling and testing, and provision of ART, along with positive prevention for those living with HIV.

However, the analysis indicated that sexual health products distribution focuses only on condom distribution.

However, STI treatment services are primarily housed within the projects themselves, while a few agencies refer clients to other doctors and government clinics.

BCC distribution is available only in 82% projects.

For ICTC and ART services, the primary mechanism is to refer clients to government clinics, along with private clinics.

In the main HIV service provision offered by the range of organisations mapped are a mixture of different components of what should be a comprehensive approach to HIV prevention, treatment, care and support. This could have an impact on effectiveness of service delivery and a sustained reduction on HIV prevalence.

See Annexure 1 for detailed breakdown by district of service provision.

Table 2

Sr. no.	State/UT	STI	ICTC	ART	LA	OR	DIC	COUN	CON	BCC
1.	Andhra Pradesh	16	16	16	17	16	16	16	16	16
2.	Bihar	04	04	04	04	04	NA	04	04	04
3.	Goa	03	03	03	03	03	02	03	03	03
4.	Karnataka	09	09	09	09	09	09	09	09	09
5.	Kerala	05	05	05	05	08	01	08	08	08
6.	Maharashtra	08	07	07	09	08	08	08	08	04
7.	Manipur	04	04	04	04	04	04	04	05	04

8.	New Delhi	08	08	08	08	08	08	08	08	08
9.	Pondicherry	01	01	01	01	01	01	01	01	01
10.	Tamilnadu	15	15	15	15	15	15	15	15	15
11.	Uttar Pradesh	13	13	13	13	13	09	13	13	13
12.	West Bengal	09	10	10	10	09	09	10	09	04

Population served

Of the 108 projects 104 mostly work with males who have sex with males in general, which includes male sex workers, and 4 projects specifically focus their service provision with arvani/hijra communities. which are located in the states of Maharashtra, New Delhi, and Tamilnadu.



Some of the users of a drop-in centre in Tamilnadu

Conclusions

- 54% of the total organisations mapped were MSM community-based organisations, while the remaining 43% were NGOs, and 3% are networks.
- Primarily it is community-based organisations that provide drop-in centres and outreach services.
- Legal advice services are primarily focused on advocacy with police.
- ICTC and ART are primarily available through government provisions and projects refer cases to those clinics.
- Only 82% of the projects provide BCC materials.
- Only condoms are being distributed. Water-based lubricant is not available.
- Very few MSM CBOs are being supported by the SACSs despite it being a policy of the National AIDS Control Plan (NACP-III)

Key recommendations

1. Strongly advocate with the SACS to support MSM-led community based organisations to provide a comprehensive package of HIV prevention, care and support services.
2. Support the provision of legal advice services in each CBO.
3. Scale up BCC distribution with appropriate and relevant materials.
4. Scale up the level of coverage of CBOs by increasing the number of CBOs providing HIV services for MSM in each state
5. Provision of water-based lubricant for distribution.

Further, a study on the quality and appropriateness of service provision by the range of CBOs, NGOs and government providers would be advantageous. INFI is conducting an assessment of capacity needs of the CBOs that it works with to inform training needs.

State (project highlighted are agencies currently being supported by INFI through the EU Project)											
Andhra Pradesh											
District	Agency Name	Nature of Agency	Service Provided								
			STI	ICTC	ART	LA	OR	DIC	COUN	CON	BCC
Hyderabad	Andhra Pradesh Male Minorities Association (AMMA)	NETWORK				A					
Nellore	Aikyatha Welfare Society	CBO	X	R	R	A	X	X	X	X	X
Hyderabad	Asha Society +	CBO	X	R	R	A	X	X	X	X	X
Nalgonda	Chaitanya Welfare Society	CBO	X	R	R	A	X	X	X	X	X
Nellore	Development of Underprivileged through Integrated Economical Services (DUTIES)	NGO	X	R	R	A	X	X	X	X	X
Prakasham	Green Vision	NGO	X	R	R	A	X	X	X	X	X
Secunderabad	Lepra Society (India)	NGO	X	R	R	A	X	X	X	X	X
Hyderabad	Mithrudu	CBO	X	R	R	A	X	X	X	X	X
Hyderabad	Manas Society	CBO	X	R	R	A	X	X	X	X	X
Prakasham	Navjeevan Welfare Society	CBO	X	R	R	A	X	X	X	X	X
Hyderabad	Pragathi	NGO	X	R	R	A	X	X	X	X	X
Vishakapatnam	Sahara Welfare Trust	CBO	X	R	R	A	X	X	X	X	X
Medak	Saheli Samanvaya Sangam	CBO	X	R	R	A	X	X	X	X	X
Hyderabad	Solidarity and Action Against The HIV Infection in India (SAATHII), Hyderabad Office	NGO	X	R	R	A	X	X	X	X	X
Kadapa	Sneham Welfare Society	CBO	X	R	R	A	X	X	X	X	X
Hyderabad	Suraksha Society	CBO	X	R	R	A	X	X	X	X	X
Secunderabad	Darpan Foundation	CBO	X	R	R	A	X	X	X	X	X

Acronyms	
STI	Sexual Transmitted Infection
ICTC	Integrated Counselling and Testing Centre
ART	Anti-Retro Viral Therapy
LA	Legal Advocacy
OR	Outreach
DIC	Drop-in Centre
COUN	Counselling
CON	Condom distribution
BCC	Behaviour Change Communication
X	Service available
R	Referral to service
A	Advocacy with police

State												
Bihar												
District	Agency Name	Nature of Agency	Service Provided									
			STI	ICTC	ART	LA	OR	DIC	COUN	CON	BCC	
Patna	Bihan	NGO	X	X	X	X	X		X	X	X	
Patna	All india Welfare & Research Society	NGO	X	X	X	X	X		X	X	X	
Harda	Harijan Adivasi Shikhsan samiti	NGO	X	X	X	X	X		X	X	X	
Bihta	Mahila Bal Yuva Kendra	NGO	X	X	X	X	X		X	X	X	

State												
Goa												
District	Agency Name	Nature of Agency	Service Provided									
			STI	ICTC	ART	LA	OR	DIC	COUN	CON	BCC	
South Goa	Hum Saath Trust	CBO	X	R	R	A	X	X	X	X	X	
North Goa	Rishta	NGO	X	R	R	A	X		X	X	X	
North Goa	Zindagi	CBO	X	R	R	A	X	X	X	X	X	

State												
Karnataka												
District	Agency Name	Nature of Agency	Service Provided									
			STI	ICTC	ART	LA	OR	DIC	COUN	CON	BCC	
Bellary	Sadhana	CBO	X	R	R	A	X	X	X	X	X	
Bidar	Prawardha	NGO	X	R	R	A	X	X	X	X	X	
Chamrajnagar	Belaku	CBO	X	R	R	A	X	X	X	X	X	
Chamrajnagar	Myrada	NGO	X	R	R	A	X	X	X	X	X	
Devangere	Chethana	CBO	X	R	R	A	X	X	X	X	X	
Hassan	Nazar	CBO	X	R	R	A	X	X	X	X	X	
Hassan	Swamy Vivekananda Youth Movement	NGO	X	R	R	A	X	X	X	X	X	
Mysore	Gelaya Trust	CBO	X	R	R	A	X	X	X	X	X	
Udupi	Guard	NGO	X	R	R	A	X	X	X	X	X	

State

Kerela												
District	Agency Name	Nature of Agency	Service Provided									
			STI	ICTC	ART	LA	OR	DIC	COUN	CON	BCC	
Thrissur	Deepam Educational Society for Health	NGO										
Kasaragod	Institute of Applied Dermatology	NGO	X	X	X	X	X		X	X	X	
Palakad	Rajiv Youth Foundation	NGO										
Thiruvananthapuram	Institution For Rural Development (IRD)	NGO										
Kannur	Jeevan Samaskrithi	NGO					X		X	X	X	
Allappuzha	Jilla Kudumbas amithi	NGO					X		X	X	X	
Mallapuram	Jillapanchayat Malappuram	NGO					X		X	X	X	
Kottayam	Lasyalairali	NGO										
Kollam	Lovelane Arts Society	NGO	X	X	X	X	X		X	X	X	
Kozhikode	Malabar Cultural Forum	NGO										
Pathanamthitta	Nazarathe Ashram	NGO	X	X	X	X	X		X	X	X	
Kasargod	Nehru Yuva Kendra	NGO	X	X	X	X	X		X	X	X	
Ernakulam	Sahrudaya	CBO	X	X	X	X	x	X	X	X	X	

State

Maharashtra												
District	Agency Name	Nature of Agency	Service Provided									
			STI	ICTC	ART	LA	OR	DIC	COUN	CON	BCC	
Mumbai	Udaan Trust	CBO	X	R	R	A	X	X	X	X	X	
Mumbai	Humsaya	CBO	X			A	X	X	X	X		
Mumbai	Sakhi Charchowghi Trust	CBO	X	R	R	A	X	X	X	X		
Mumbai	The Humsafar Trust	CBO	X	R	R	A	X	X	X	X	X	
Mumbai	NIPASHA center	NTW				A		X				
Mumbai	Sambhavana Society	CBO	R	R	R	A	X	X	R	X	X	
Nagpur	Sarathi Trust	CBO	R	R	R	A	X	X	X	X	X	
Pune	Udaan Trust	CBO	X	R	R	A	X	X	X	X		
Pune	Sampathik Trust	CBO	R	R	R	A	X		X	X		

State												
Manipur												
District	Agency Name	Nature of Agency	Services Provided									
			STI CARE	ICTC	ART	LA	OR	DIC	COUN	CON	BCC	
Imphal	Maruploi Foundation	CBO	X	R	R	A	X	X	X	X	X	
Imphal	Awaken Artisan Shelter Association (AASHA)	CBO	X	R	R	A	X	X	X	X	X	
Imphal	Lifeline Foundation	NGO	X	R	R	A	-	-	X	X	X	
Imphal	Social Awareness Service Organisation (SASO)Social Awareness	NGO	X	R	R	X	X	X	X	X	X	
	Sissy Approach for Volunteer Esteem (SAVE)	CBO		-	-	-	X	X	-	X	-	

State												
New Delhi												
District	Agency Name	Nature of Agency	Service Provided									
			STI	ICTC	ART	LA	OR	DIC	COUN	CON	BCC	
New Delhi	Mitr Trust	CBO	X	R	R	A	X	X	X	X	X	
New Delhi	Aakansha Samiti	NGO	X	R	R	A	X	X	X	X	X	
New Delhi	Development, Advocacy and Research Trust (DART)	NGO	X	R	R	A	X	X	X	X	X	
New Delhi	Milan Project (Naz foundation India Trsut)	CBO	X	R	R	A	X	X	X	X	X	
New Delhi	Aradhya	NGO	X	R	R	A	X	X	X	X	X	
New Delhi	BARD	NGO	X	R	R	A	X	X	X	X	X	
New Delhi	Maa Ratni	NGO	X	R	R	A	X	X	X	X	X	
New Delhi	Sahara Centre for Residential Care & Rehabilitation (MSM)	NGO	X	R	R	A	X	X	X	X	X	

State												
Pondicherry												
District	Agency Name	Nature of Agency	Service Provided									
			STI	ICTC	ART	LA	OR	DIC	COUN	CON	BCC	
Pondi	Sahodaran Community Oriented Health Development Society	CBO	X	R	R	A	X	X	X	X	X	

State

Tamilnadu											
District	Agency Name	Nature of Agency	Service Provided								
			STI	ICTC	ART	LA	OR	DIC	COUN	CON	BCC
Chennai	Sahodaran	CBO	X	R	R	A	X	X	X	X	X
Chennai	Social Integration Development for Aravanis Foundation (SIDAF)	CBO	X	R	R	A	X	X	X	X	X
Chennai	Social Welfare Association for Men (SWAM)	CBO	X	R	R	A	X	X	X	X	X
Chennai	Solidarity and Action Against The HIV Infection in India (SAATHII), Chennai Office	NGO	X	R	R	A	X	X	X	X	X
Chennai	South India Positive Transgender Foundation	CBO	X	R	R	A	X	X	X	X	X
Chennai	Tamilnadu Aravanigal Association (THAA)	CBO	X	R	R	A	X	X	X	X	X
Chennai	Indian Community Welfare Organisation	NGO	X	R	R	A	X	X	X	X	X
Coimbatore	Nesam Social Welfare Organization	CBO	X	R	R	A	X	X	X	X	X
Kumbakonum	Lotus Integrated AIDS Awareness Society	CBO	X	R	R	A	X	X	X	X	X
Kumbakonum	Lotus Sangam	CBO	X	R	R	A	X	X	X	X	X
Madurai	Gokulam Social Welfare Organization	CBO	X	R	R	A	X	X	X	X	X
Mayaliduthurai	Kith & Kins Social Welfare Organization	CBO	X	R	R	A	X	X	X	X	X
Tirunaveli	Saral Aids Thaduppu Sangam	CBO	X	R	R	A	X	X	X	X	X
Tiruvanmiyur	Challenge	CBO	X	R	R	A	X	X	X	X	X
Tiruchirapalli	Snegyitham	CBO	X	R	R	A	X	X	X	X	X

State											
Uttar Pradesh											
District	Agency Name	Nature of Agency	Service Provided								
			STI	ICTC	ART	LA	OR	DIC	COUN	CON	BCC
Agra	Naya Savera	CBO	X	X	X		X	X	X	X	X
Agra	Hyphid	NGO	X	X	X	X	X	X	X	X	X
Agra	Mamta	NGO	X	X	X	X	X	X	X	X	X
Agra	Hope	NGO	X	X	X	X	X	X	X	X	X
Ghaziabad	Basera	CBO	X	X	X	X	X	X	X	X	X
Ghaziabad	Smiksha	NGO	X	X	X	X	X		X	X	X
Ghaziabad	Sunrise	NGO	X	X	X	X	X	X	X	X	X
Kanpur	Raza Hussain Memorial Charitable Society	NGO	X	X	X	X	X		X	X	X
Kanpur	Hasrat Trust (Sankalp)	CBO	X	X	X	X	X		X	X	X
Lucknow	Bharosa turst	CBO	X	X	X	X	X	X	X	X	X
Varanasi	Asha	CBO	X	X	X	X	X	X	X	X	X
Varanasi	Rukmani Vidhalaya	NGO	X	X	X	X	X	X	X	X	X
Varanasi	jankalyan Sansthan	NGO	X	X	X	X	X		X	X	X

State											
West Bengal											
District	Agency Name	Nature of Agency	Service Provided								
			STI	ICTC	ART	LA	OR	DIC	COUN	CON	BCC
Burdwan	Swapnil	CBO	X	R	R	R	X	X	X	X	
Kolkata	MANAS Bangla	CBO	X	R	R	A	X	X	X	X	X
Kolkata	Pratyay Gender Trust	CBO	R	R	R	A	X	X	X	X	
Kolkata	Astitva Dakhshin	CBO	R	R	R	A	X	X	X	X	
Kolkata	Dum Dum Swikriti Society	CBO	R	R	R	A	X	X	X	X	X
Kolkata	Kolkata Rista	CBO	R	R	R	A	X	X	R	X	
Kolkata	Koshish	CBO	R	R	R	A	X	X	X	X	
Kolkata	Prajak Society	NGO	X	R	R	A	X	X	X	X	X
Kolkata	PLUS	CBO	R	R	R	A	X	X	X	X	
Kolkata	SAATHII	NGO		R	R	X			R		X